

Coma Star Cluster (Melotte 111)

Physical Characteristics...

- Designation: Melotte 111
 - Nickname: Coma Star Cluster
 - Object Type: Open Cluster
 - Constellation: Coma Berenices (Bernice's Hair)
 - Coordinates: R.A. 12^h 22.5^m; Dec. +25° 51
-
- Naked eye deep-sky object
 - Just north of the Great Virgo Galaxy Cluster
 - Not to be confused with the Coma Galaxy Cluster

A photograph of a starry night sky. The background is a deep, dark black, densely populated with numerous small, bright white and yellow stars. In the center of the image, there is a distinct cluster of stars that appear to have a blue or purple hue, standing out from the surrounding white and yellow stars. The overall appearance is that of a rich star field, possibly a star-forming region or a specific constellation.

Source: Wikipedia Commons

East Late Evening

Ursa Major



Arcturus

Corvus



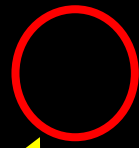
Spica

From Big Dipper...

- Arc to Arcturus
- Spike to Spica

East Late Evening

Ursa Major



Mel. 111

Arcturus

Spica

Corvus



EarthSky.org

From Big Dipper...

- Arc to Arcturus
- Spike to Spica

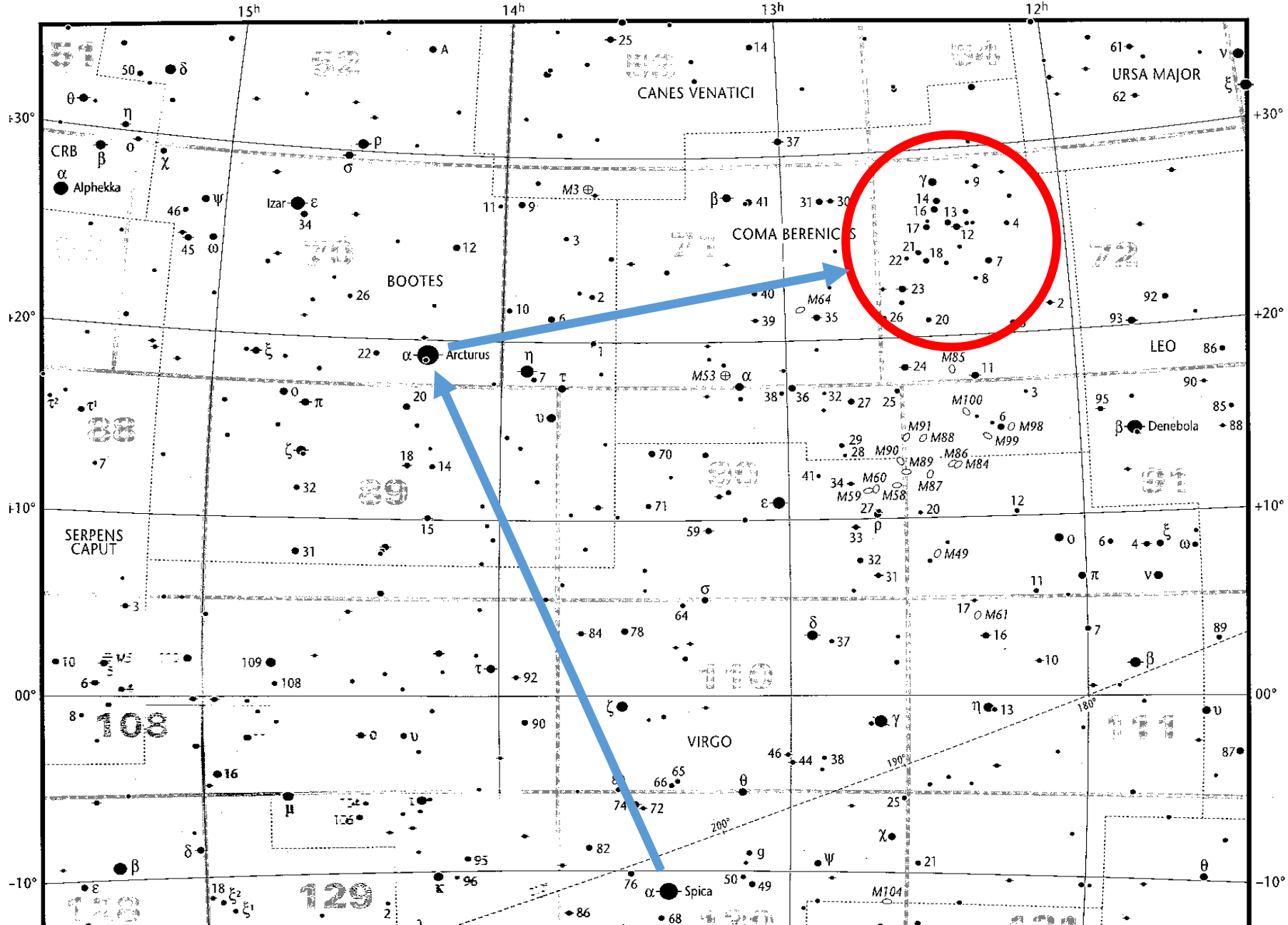
...Then

- Spica to Arcturus
- Right turn $\sim 90^\circ$

Uranometria Star Map

XI

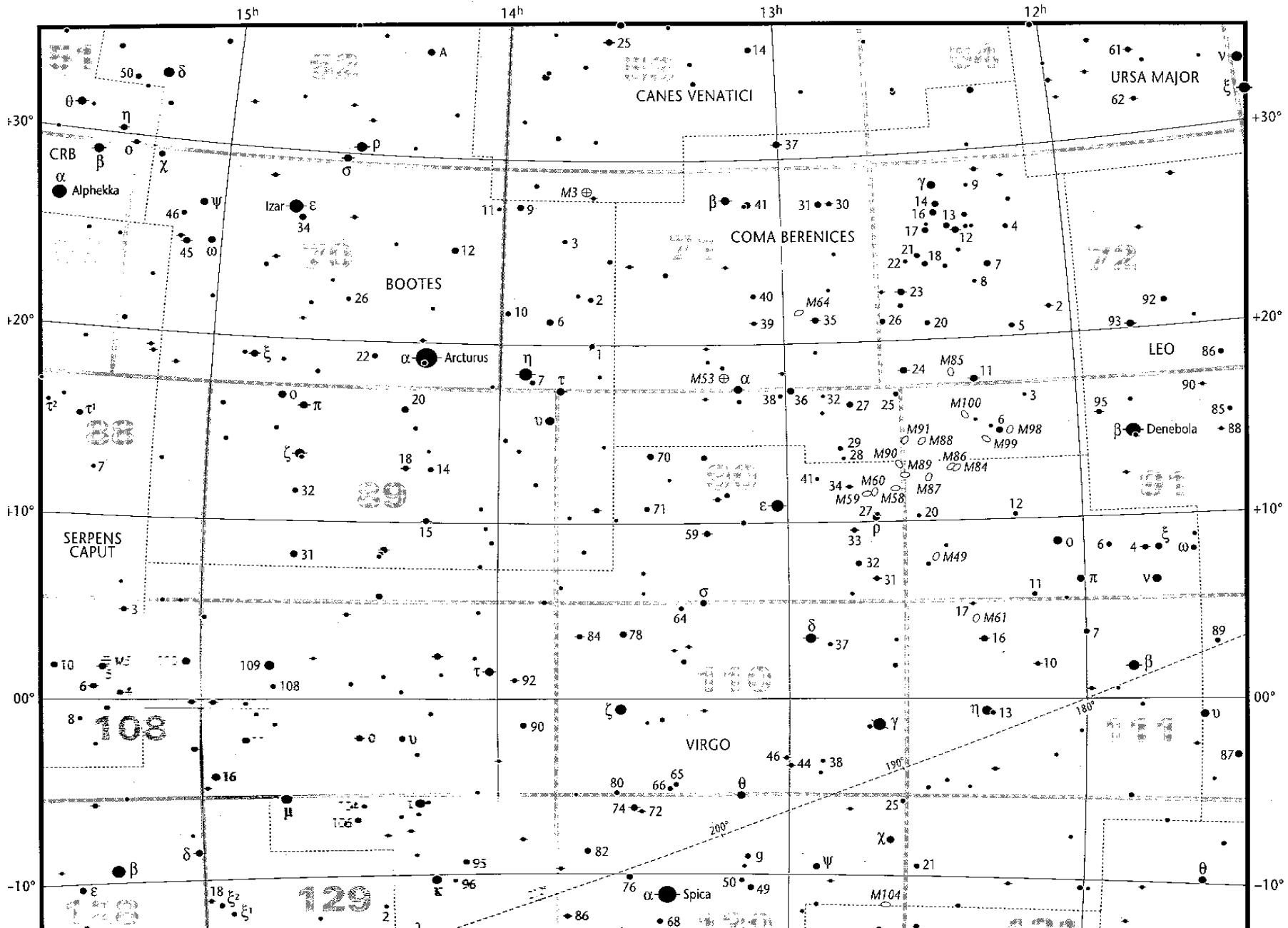
Limiting magnitude 6.5



Uranometria Star Map

XI

Limiting magnitude 6.5



Locating Melotte 111 Using Leo the Lion

From <http://earthsky.org>

“The tuft at the end of
Leo’s Tail” – C.W. Roelle





Popular Star
Atlas (1950.0)

Limiting Mag. 5

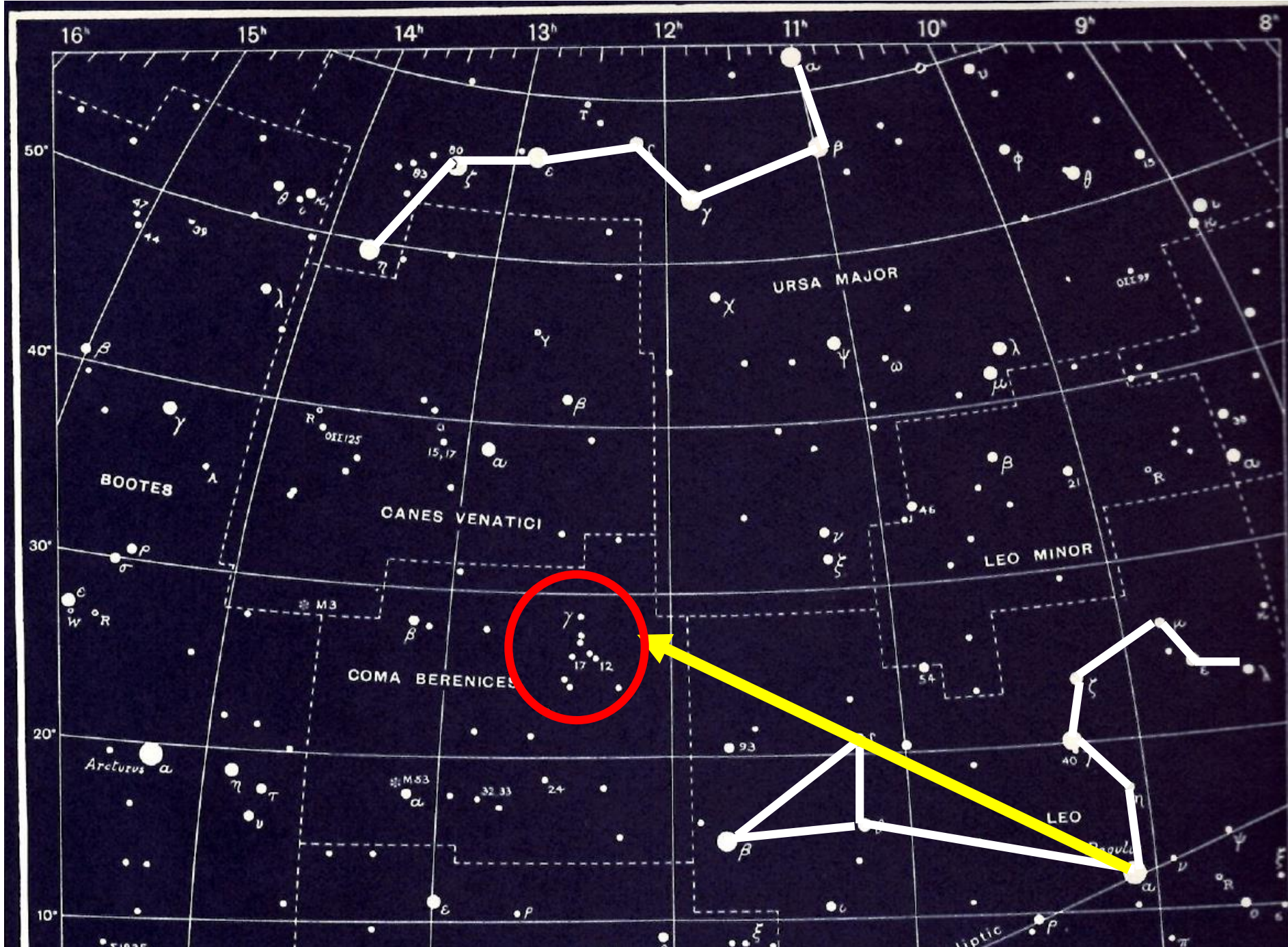


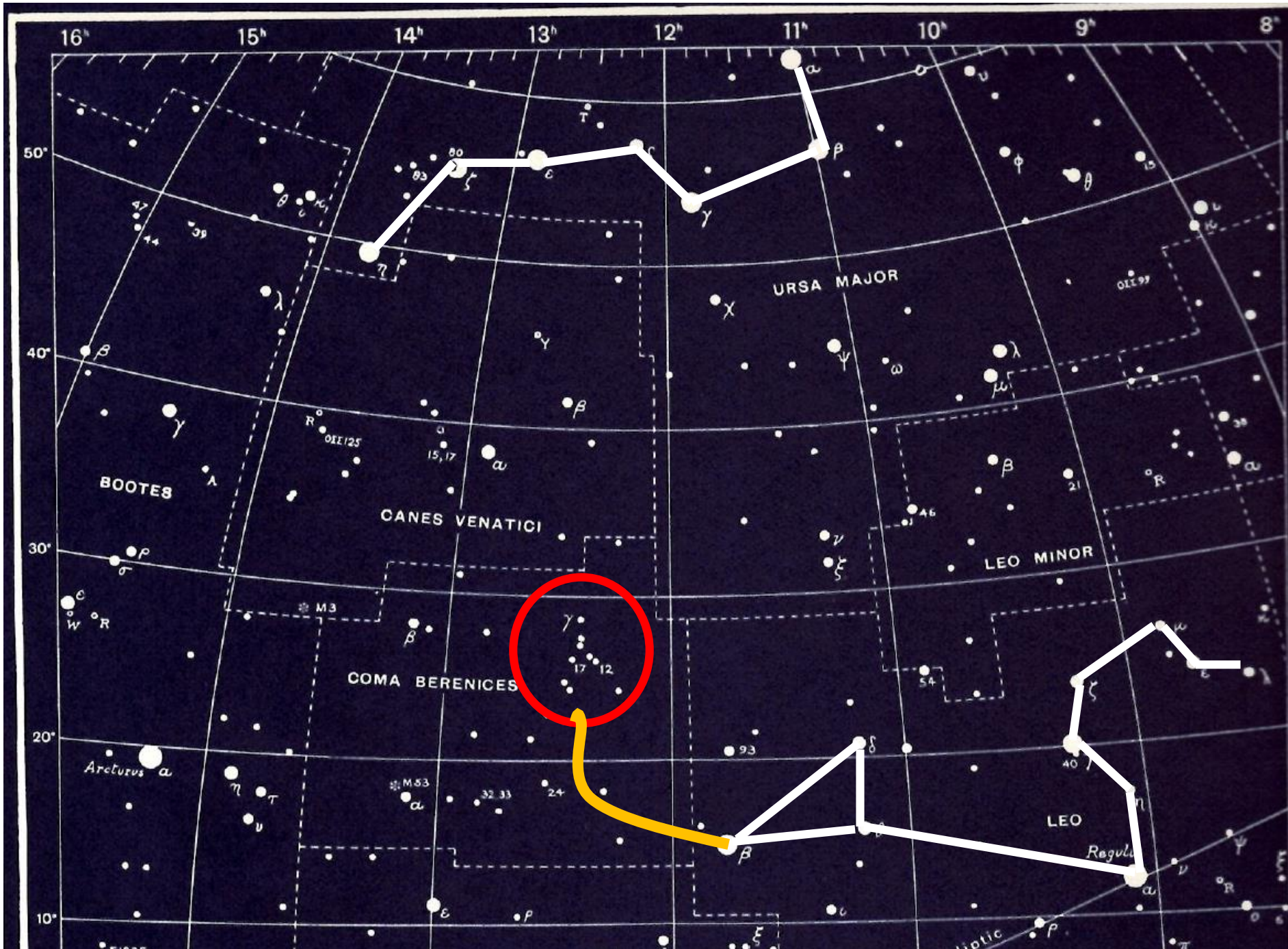
Popular Star
Atlas (1950.0)

Limiting Mag. 5

Popular Star
Atlas (1950.0)

Limiting Mag. 5





Popular Star Atlas
(1950.0)

Limiting Mag. 5

“Tuft of the Tail”

